

The ABC's of installing fonts into Windows

Outline

- Page 1 Introduction +
- Pages 2-4 Installing fonts in Windows 3.x
- Pages 5-7 Installing fonts in Windows 95

Introduction:

There are two font file formats on this CD-ROM.

TrueType - for use directly by Windows, and

Postscript Type One - for use by ATM, some Postscript printers, or some DOS desktop publishing applications. If you use this format please refer to your ATM documentation for installation help.

All the fonts are found in the PC directory or sub-directories:

"CD-ROM"

"PC" directory

"TT_ALL" directory - fonts in TrueType format

"PS_ALL" directory- fonts in PostScript Type One format

"BONUS" directory - additional "bonus" fonts

"OTHER" directory - other font files, not usually required.

The fonts included here will work directly with Windows in the TrueType format (in the TT_ALL directory.) Or with ATM (Adobe Type Manager) in PostScript Type One format (in the PS_ALL directory.)

If you have questions about which font to use - then you probably should use the TrueType fonts found in the TT_ALL directory. You should never need any of the files in the "OTHER" directory for regular windows font use.

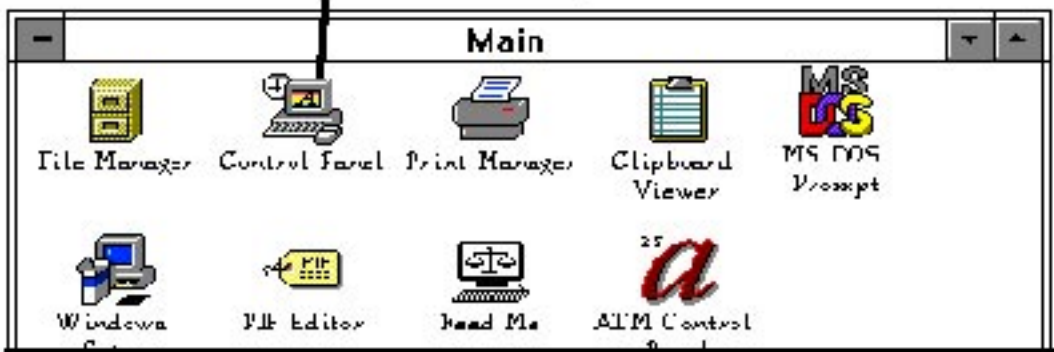
For users that must use the Postscript Type one format (for some reason.) This will only apply to a very few users who can not use the TrueType format and do not have ATM. Please find the file "SAMP_INI.TXT" for help on manually installing these fonts.

(NOTE : These are also font files that can be used in many PC Desktop publishing applications - please refer to your application's documentation about installing PostScript (Type One) fonts from the "PS_ALL" directory and other files in the "OTHER" directory.)

Windows TrueType Installation 1 of 5

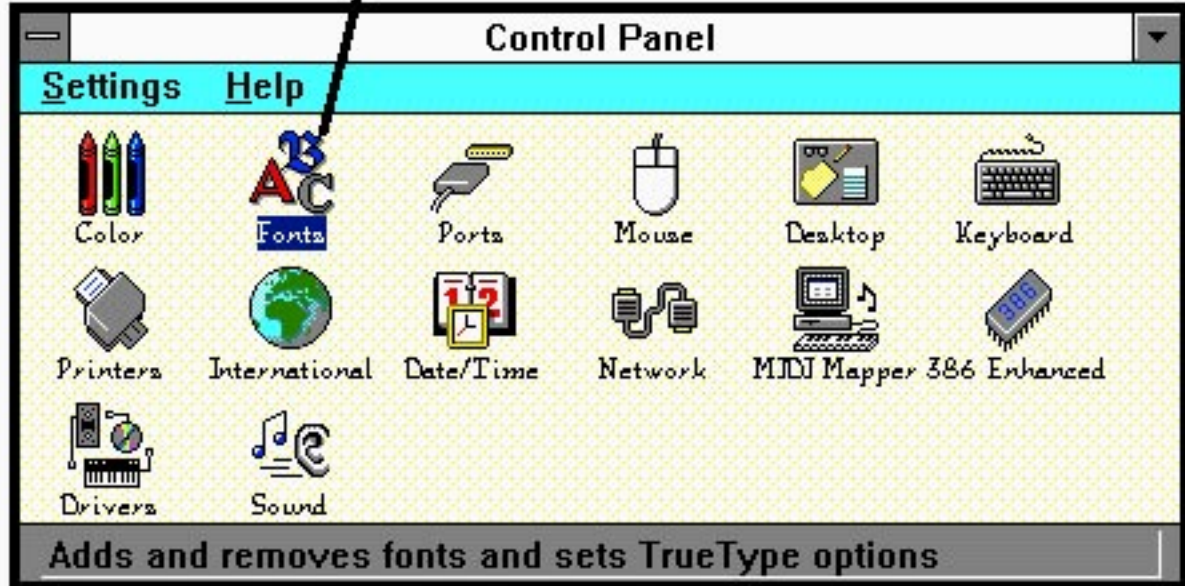


Double click on Control Panel



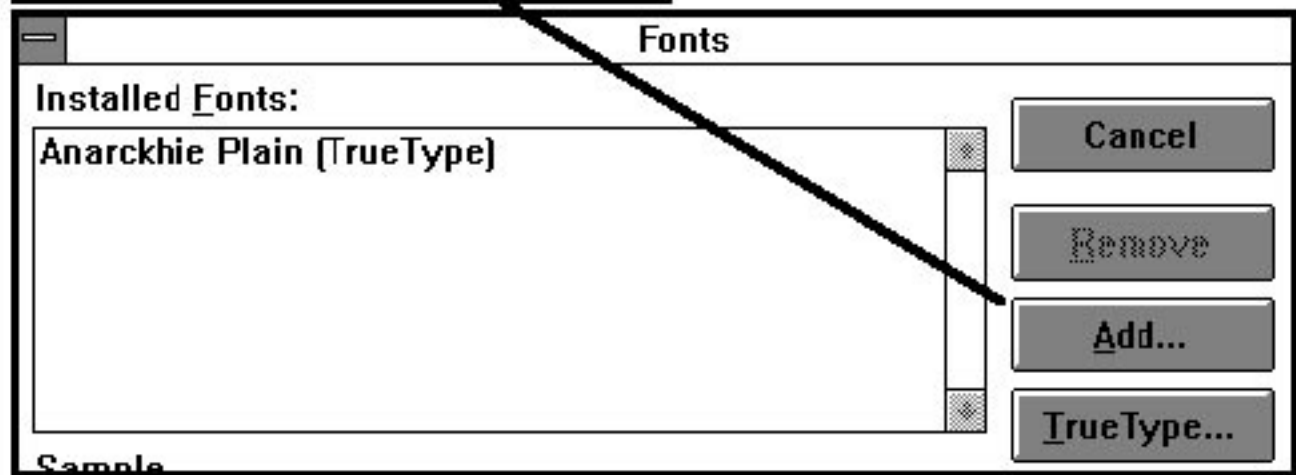
Windows TrueType Installation 2 of 5

Double click on Fonts Control Panel



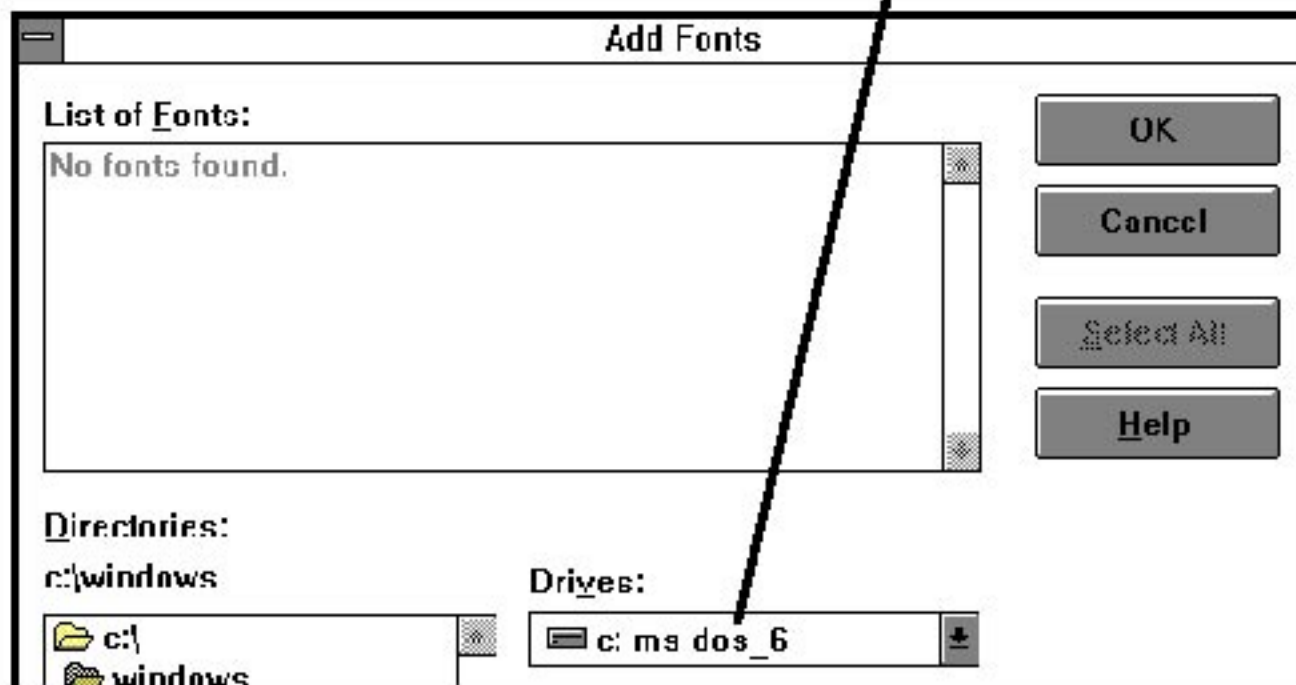
Windows TrueType Installation 3 of 5

Click on the Add... Button



Windows TrueType Installation 4 of 5

Click on the Drives area: Choose your CD-ROM drive

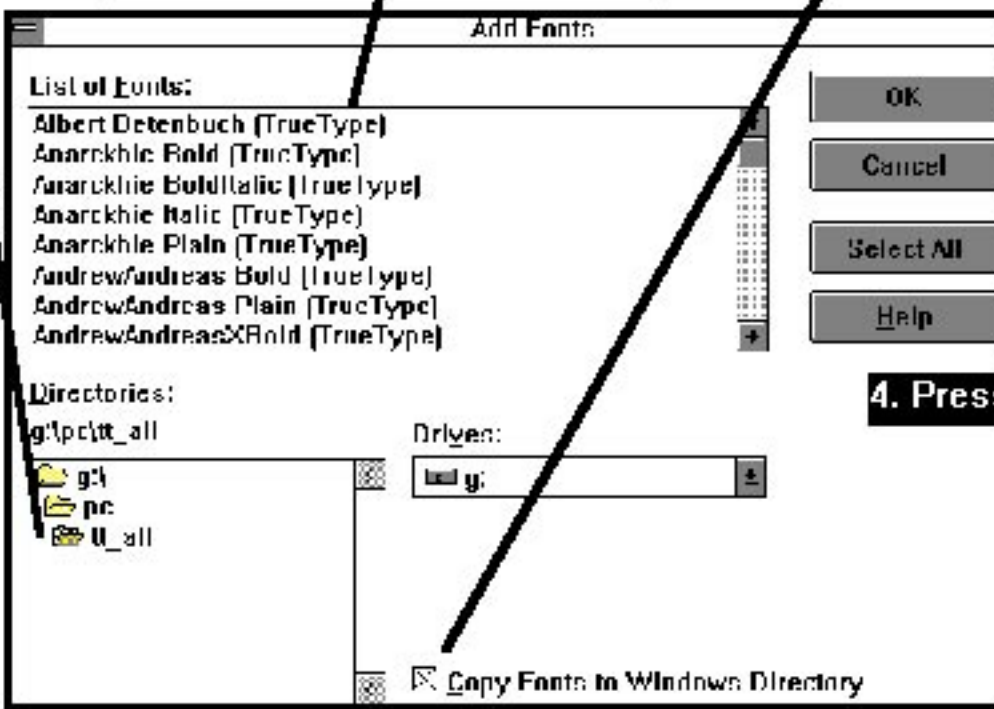


Windows TrueType Installation 5 of 5

1. Select the `\\pc\tt_all` directory

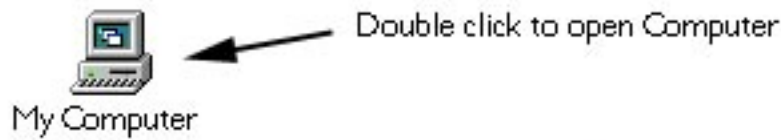
2. Click on the fonts to install

3. Make sure this is

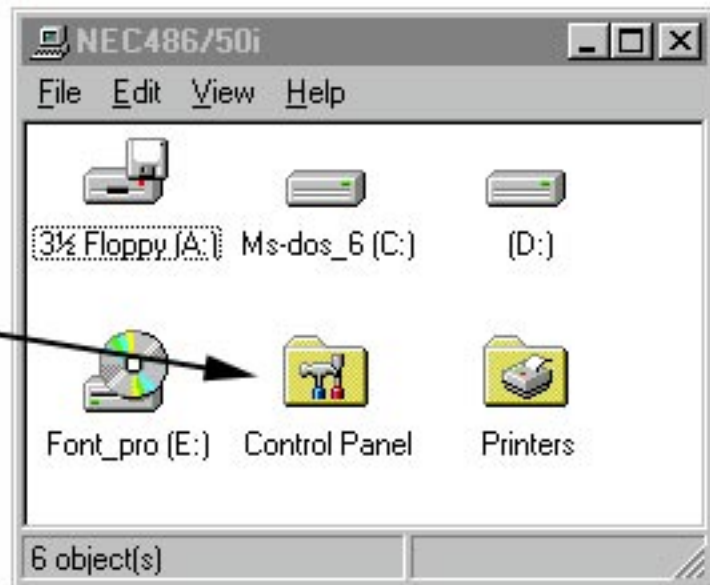


4. Press OK, when done

Windows 95 TrueType Installation 1 of 5

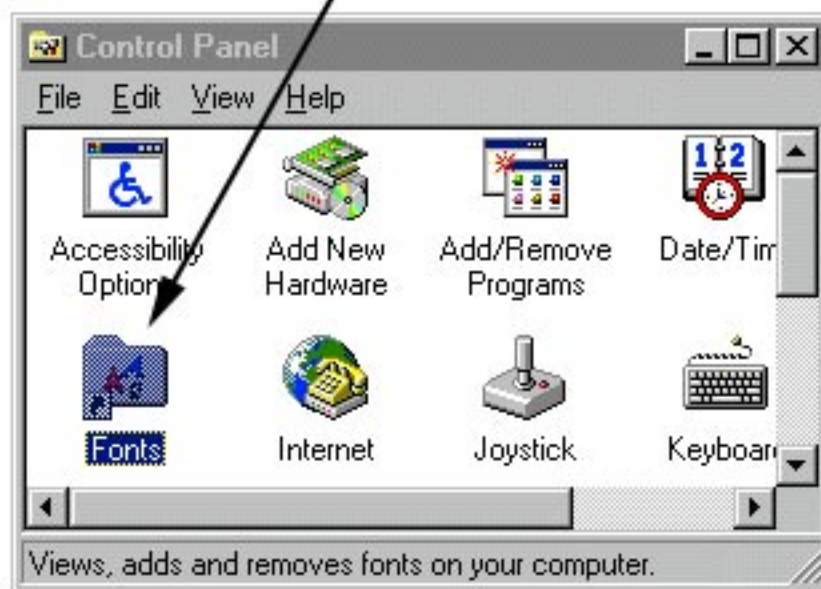


Double click on Control Panel



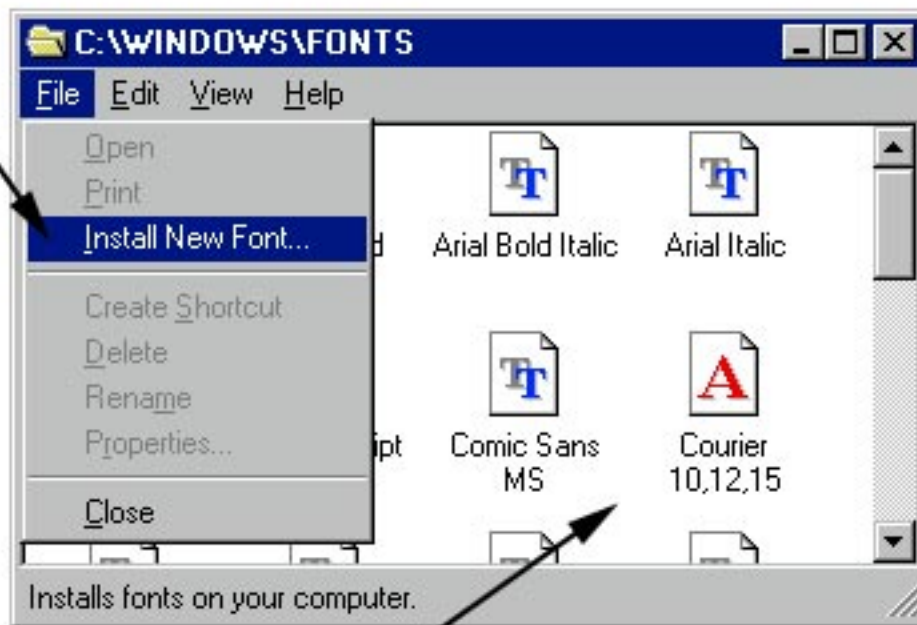
Windows 95 TrueType Installation 2 of 5

Double click on the Fonts Folder



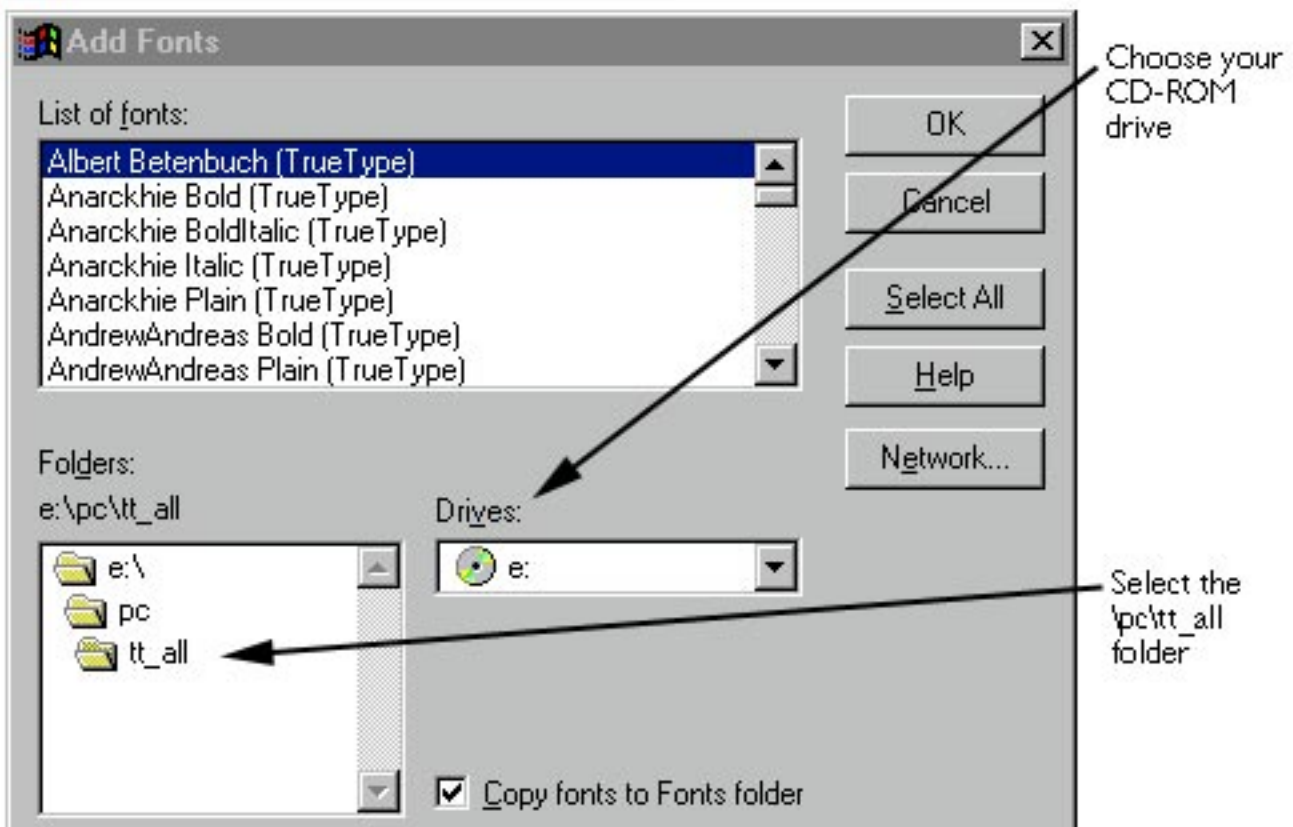
Windows 95 TrueType Installation 3 of 5

Select Install New Font... from the File menu



Or place the fonts directly into the folder

Windows 95 TrueType Installation 4 of 5



Windows 95 TrueType Installation 5 of 5

